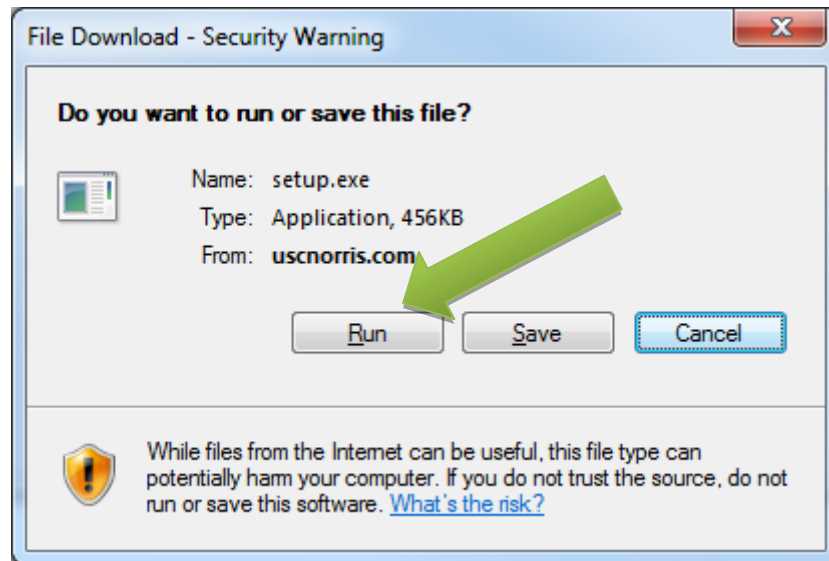


CAFÉ Installation Instructions

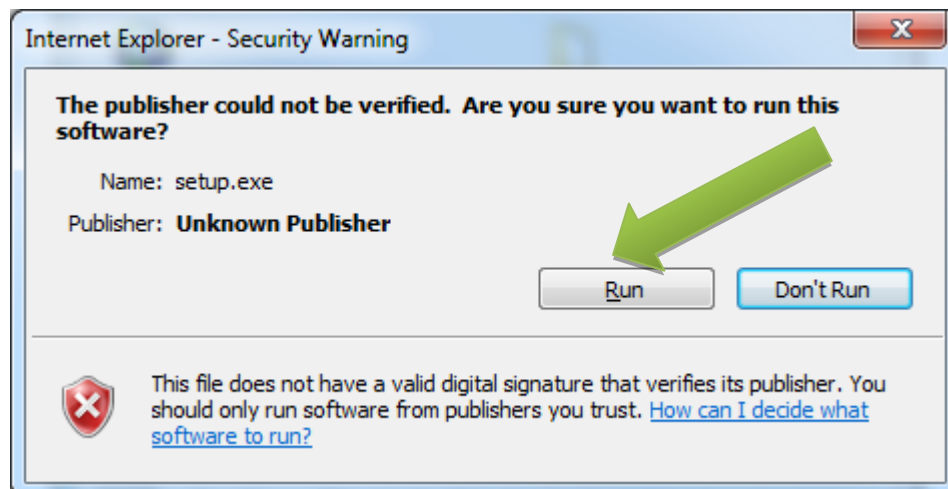
Step 1:

Once you click the Install CAFÉ link the following screen will popup. Click on the “Run” button.



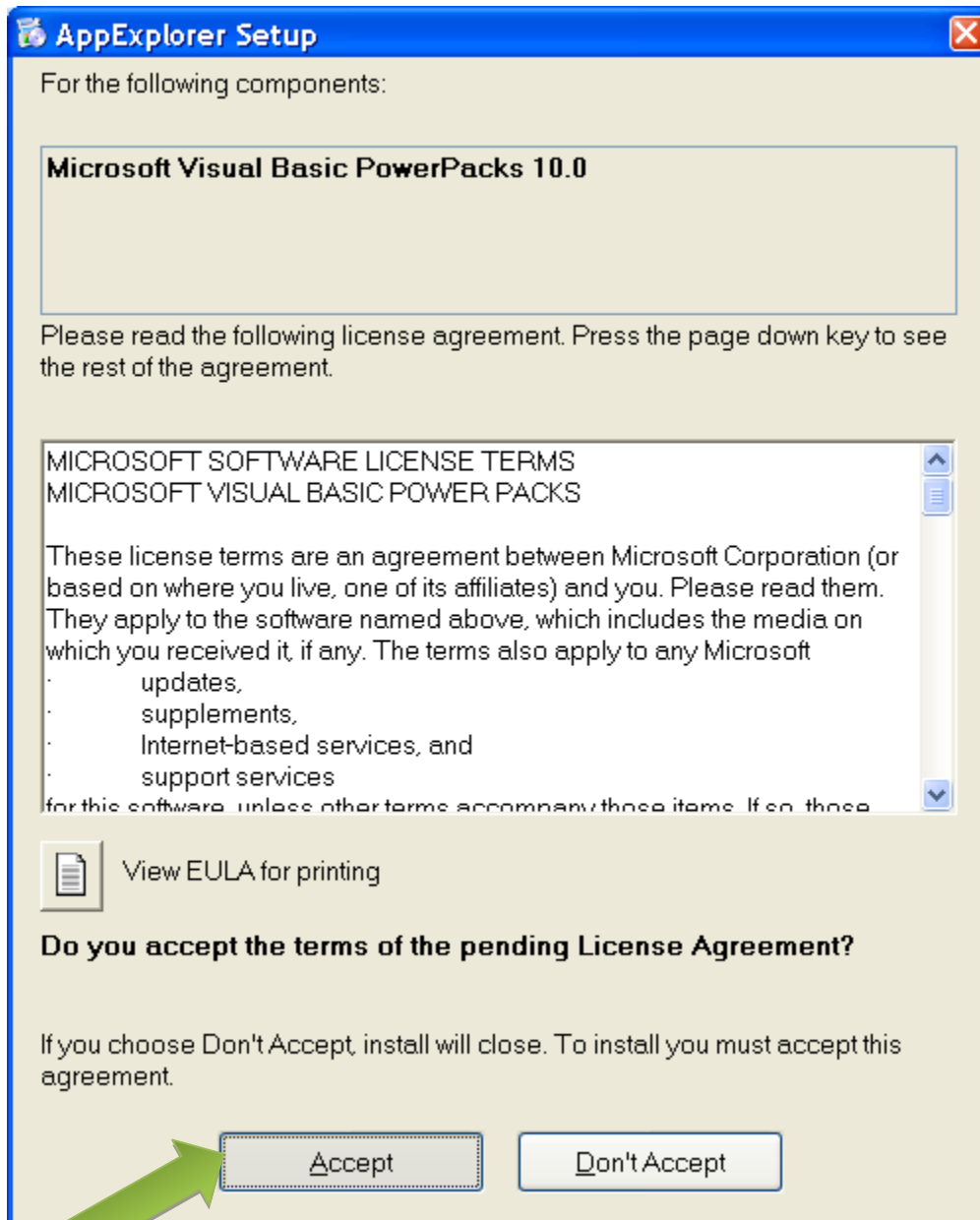
Step 2:

Click on the “Run” button.



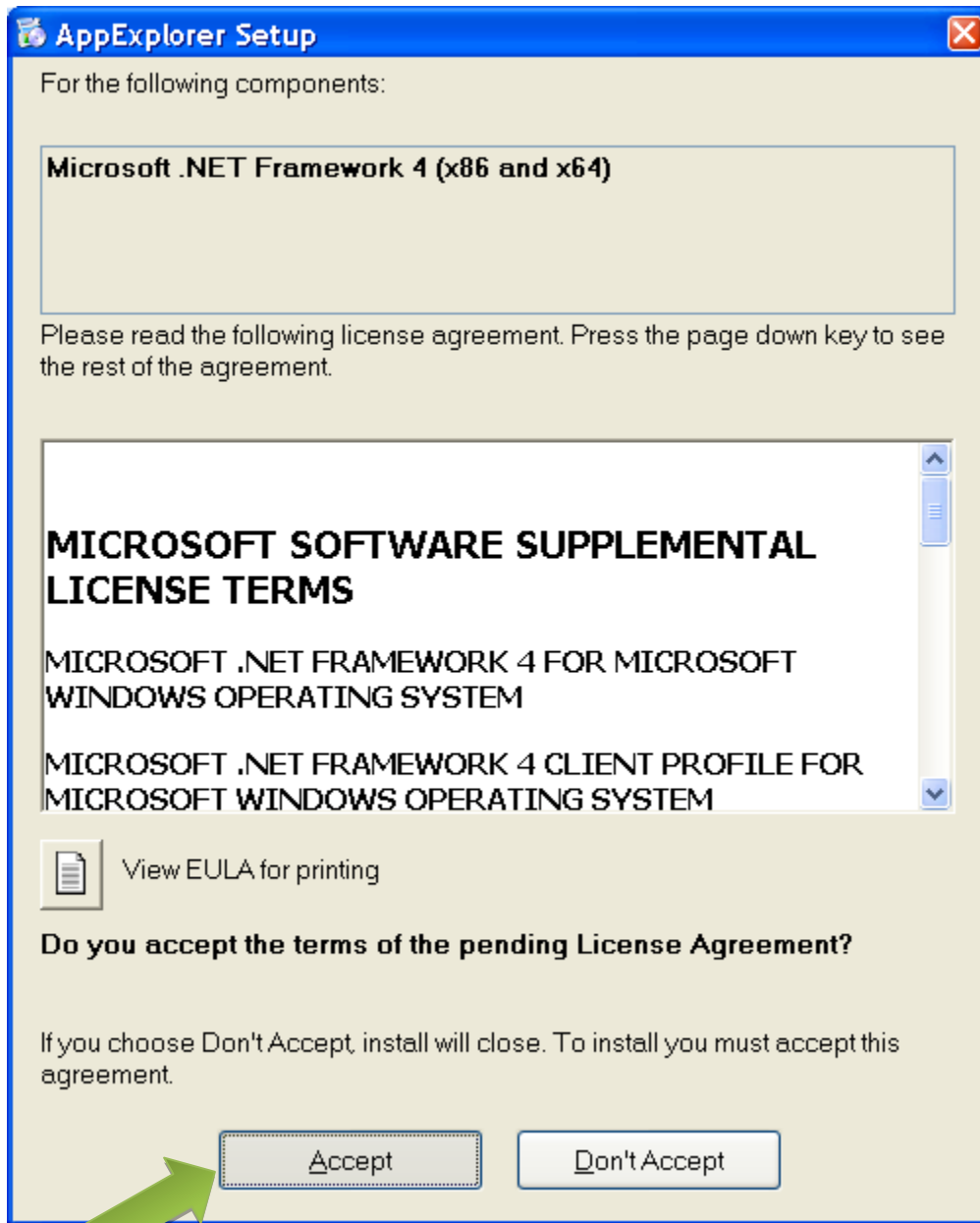
Step 3:

It will install all the Prerequisites that are missing. First it installs the PowerPacks 10.0. Click on the "Accept" button.



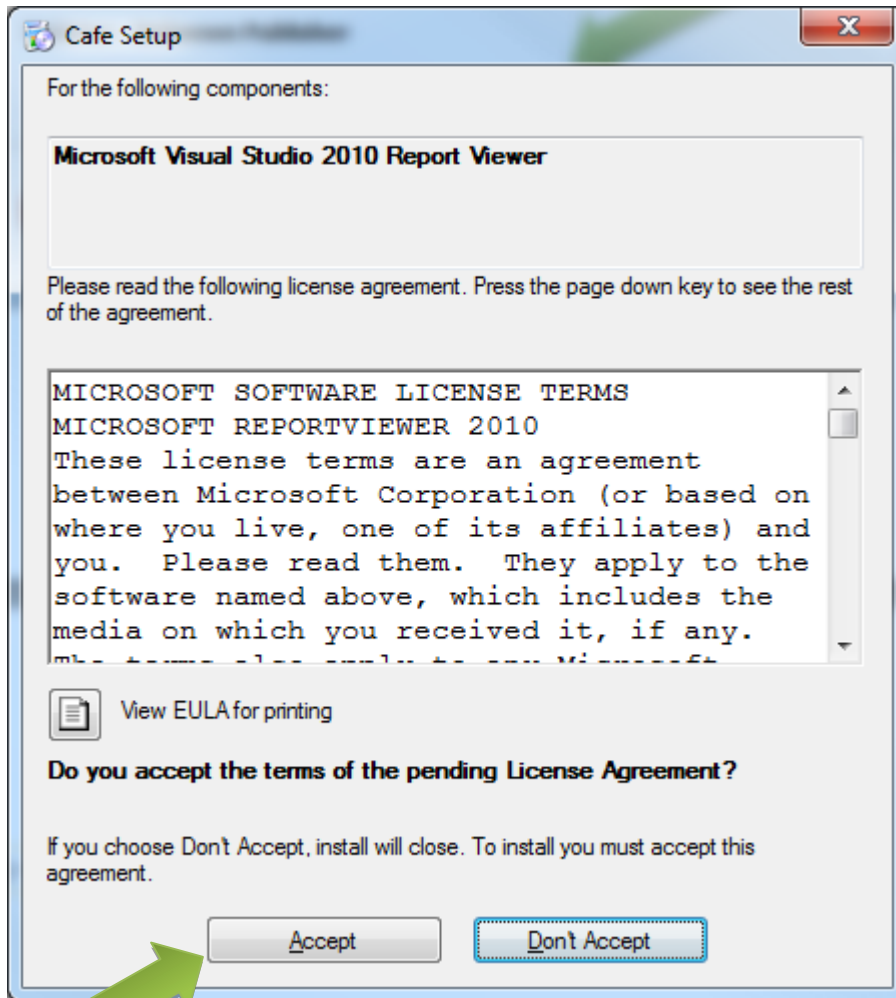
Step 4:

Next the .NET framework version 4 is installed. Click on the “Accept” button. This might take several minutes so please be patient.



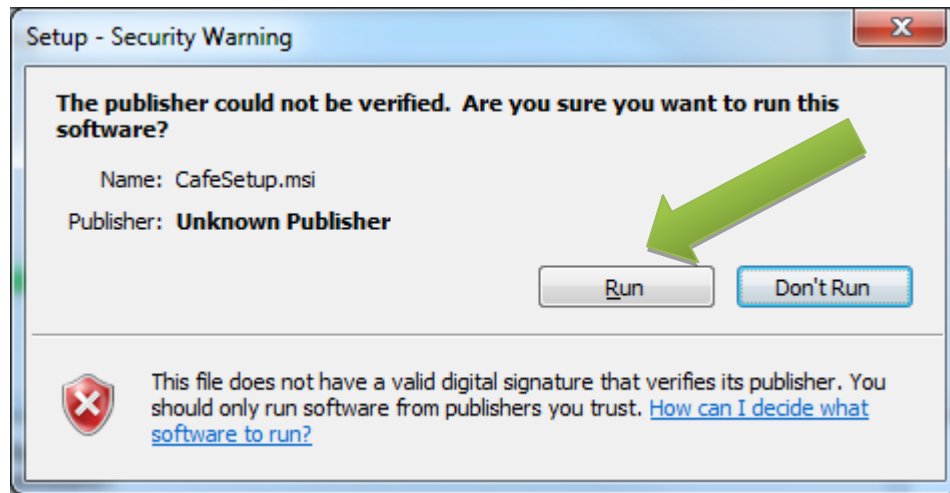
Step 5:

The last prerequisite is the Microsoft Visual Studio 2010 Report Viewer. Click on the “Accept” button.



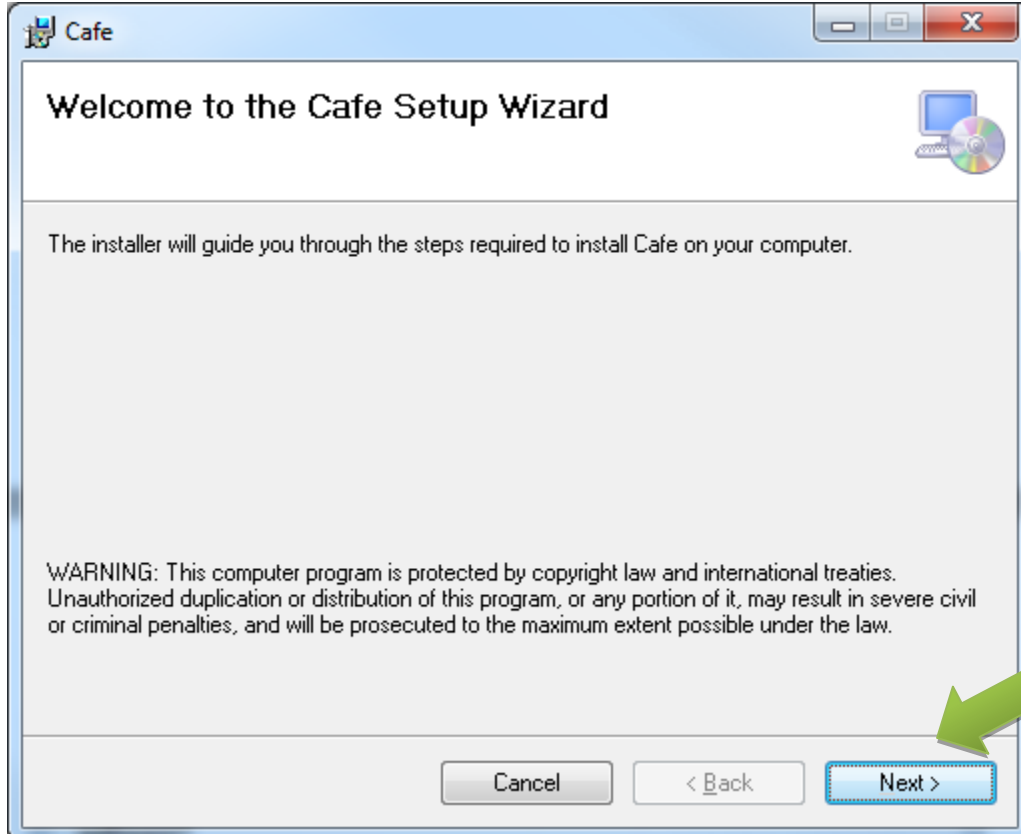
Step 6:

Click on “Run” again.



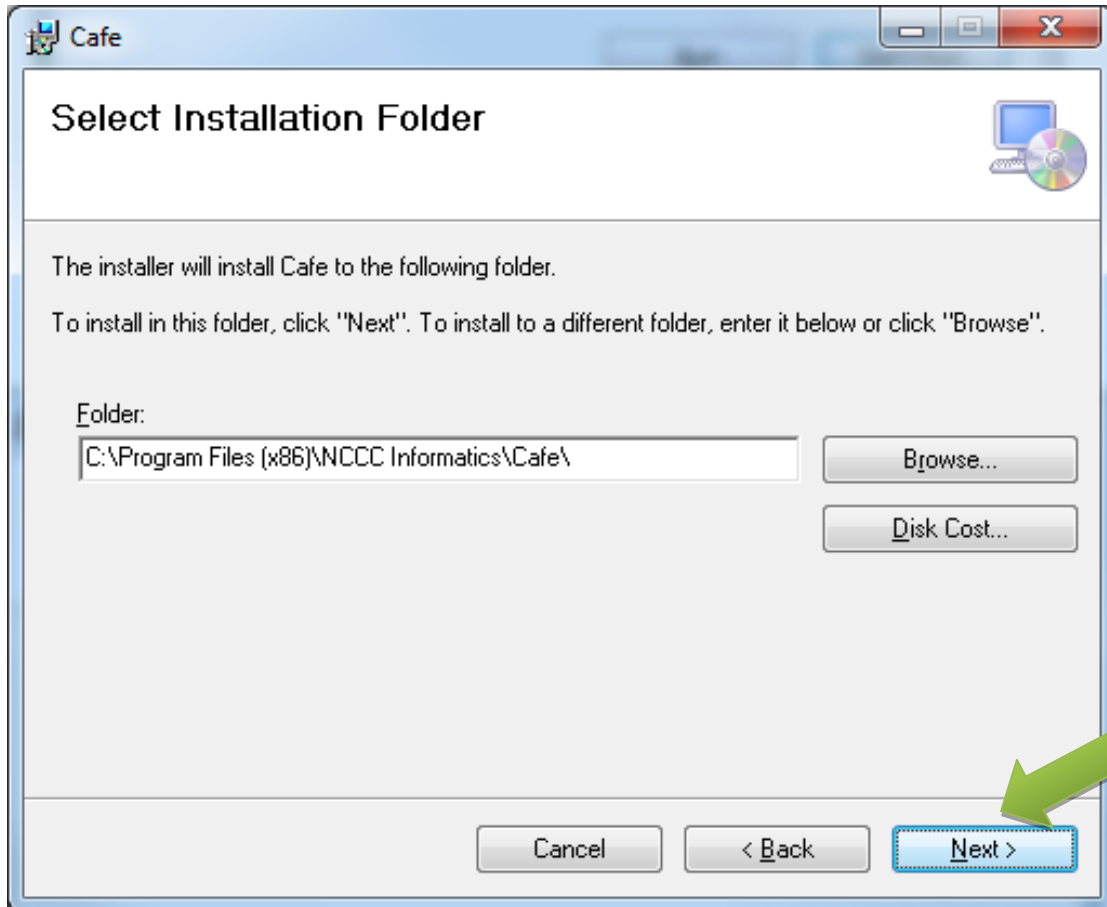
Step 7:

Click on “Next” on the Café Setup Wizard screen.



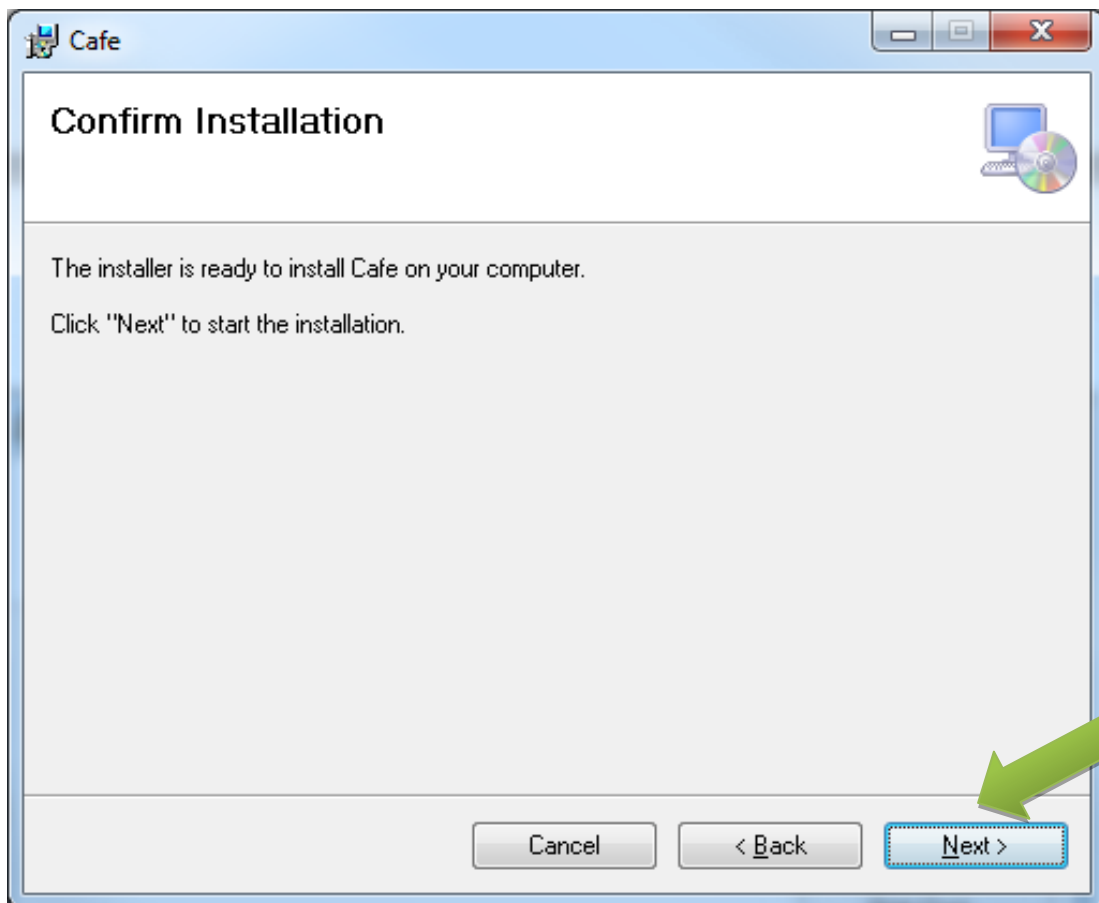
Step 8:

Click on "Next" on the Folder Selection Screen.



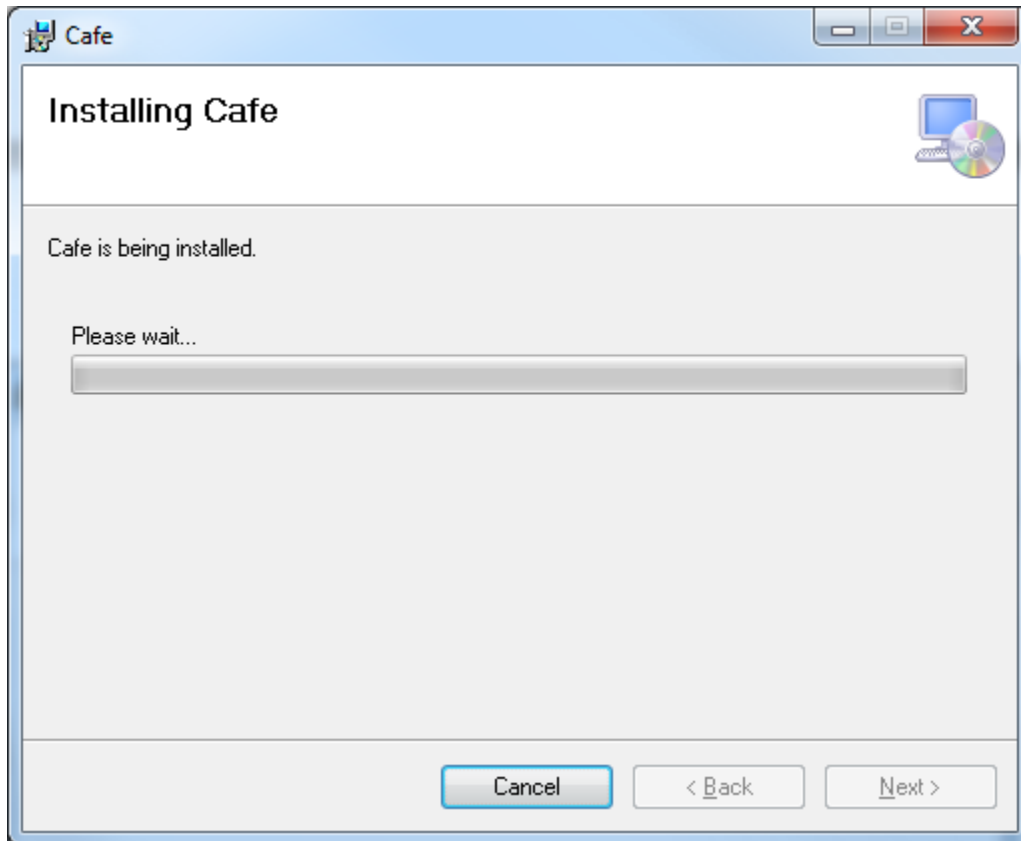
Step 9:

Click on "Next" on the Confirm Installation Screen.



Step 10:

The installation process will begin and you see the following screen. Please wait while CAFÉ is being installed.



Step 11:

Once the installation completes click on the Close button. A CAFÉ icon will be created on the desktop for you. Click on that to launch CAFÉ and login.

